

DIMENSIONS ARE IN MILLIMETERS (mm) UNLESS OTHERWISE SPECIFIED.

APPLICABLE SPECIFICATIONS:  
 GENERAL PRODUCT SPECIFICATIONS - TBD  
 CONFIGURATION SPECIFICATION - 265120A200  
 SALES WORKSHEET - CP-20 1001

SHOWN WITH MOST COMMON ACCESSORIES  
 REFER TO SALES WORKSHEET FOR OPTIONAL ACCESSORIES.

PROJECT: cryopumps\_cp20

REV.	CRSP NO.	DATE	BY	MFG.	QUAL.	ENGR.
C	4891	18 FEB 10	JPK	TSW	RGS	ERS
B	4770	14 AUG 09	JPK	TSW	RGS	ERS
A	4654	08 SEP 08	JPK	YB	RGS	ERS
		09 JUL 08	JPK	YB	RGS	ERS

TITLE

OUTLINE DRAWING  
 CP-20 CRYOPUMP ASSEMBLY  
 50/60 HZ  
 ISO 500

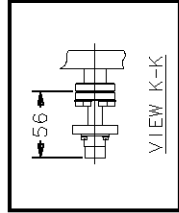
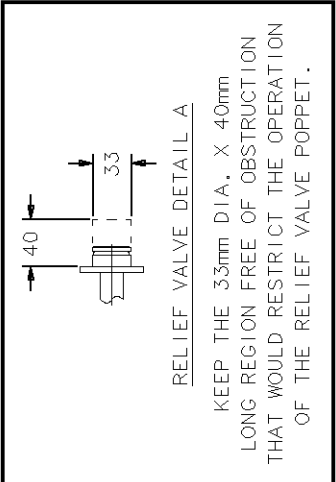
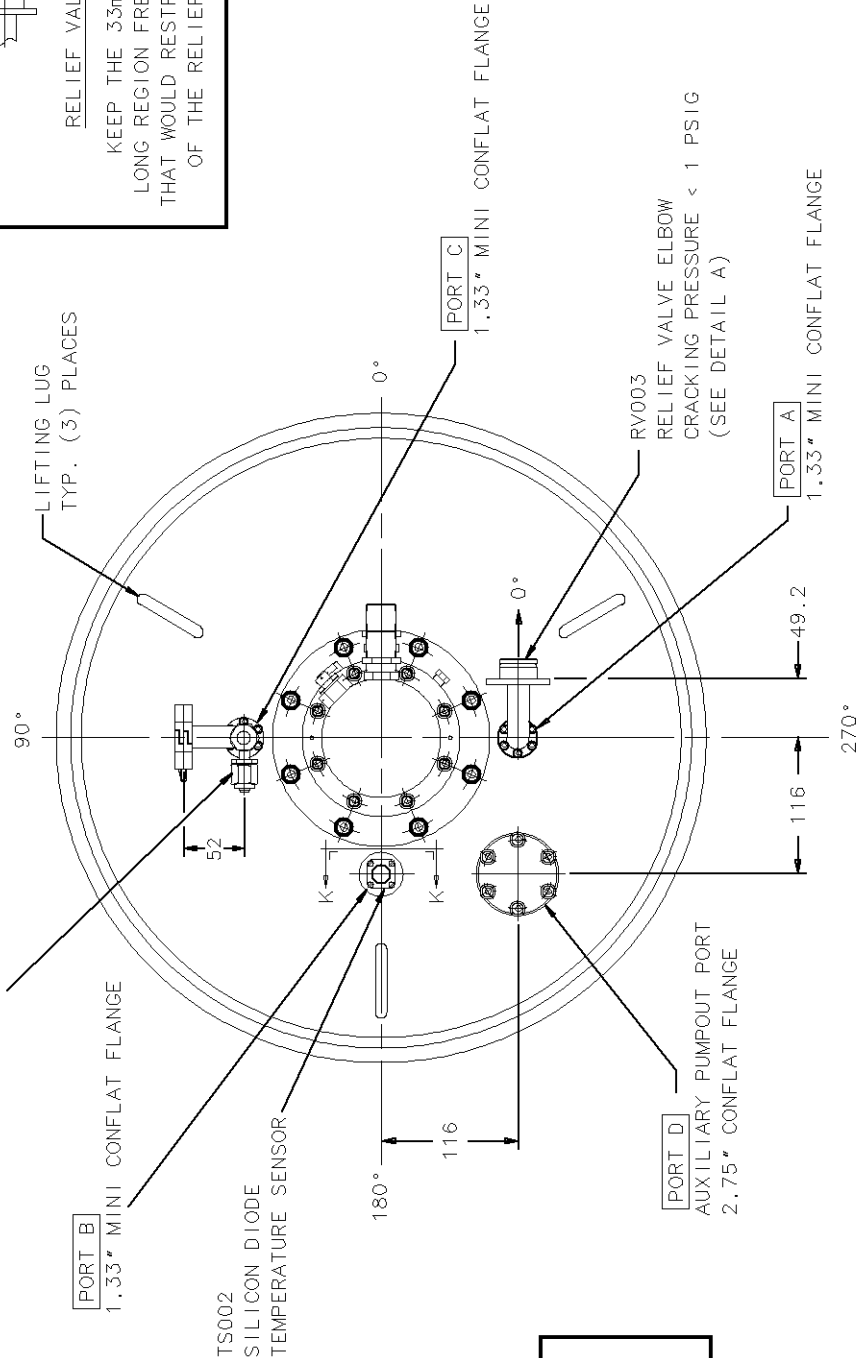
MATERIAL LEGEND	
DESIGNATION	MATERIAL
[Hatched Box]	ST. STL.
[Cross-hatched Box]	ALUMINIUM
[Diagonal-hatched Box]	COPPER, OFHC

**Sumitomo**  
(SHI) CRYOGENICS OF AMERICA, INC.

NO. 265120A200I00-C  
 SHEET 1 OF 2

PROPRIETARY NOTICE: THIS DOCUMENT IS THE PROPERTY OF SUMITOMO (SHI) CRYOGENICS OF AMERICA, INC., AND SHALL NOT, WITHOUT THE EXPRESS WRITTEN PERMISSION OF SCAI, BE REPRODUCED OR COPIED IN WHOLE OR IN PART BY ANY PERSON OUTSIDE OF SCAI OR, IF LOANED BY SCAI TO SUCH PERSON, SHALL NOT BE USED FOR FURNISHING INFORMATION TO ANY THIRD PARTY OR FOR ANY PURPOSE OTHER THAN THAT FOR WHICH IT IS LOANED.  
 FORM NO. DD102089-A Rev. B (3/00)

PT006  
NW25 PUMPOUT  
#6 ULTRA-SEAL PURGE  
THERMOCOUPLE GAUGE PORT



VIEW Z-Z

TITLE

OUTLINE DRAWING  
CP-20 CRYOPUMP ASSEMBLY  
50/60 HZ  
ISO 500

REV. C



NO. 265120A200I00-C  
SHEET 2 OF 2

REV.	CRSP NO.	DATE	BY	MFG.	QUAL.	ENGR.
	09	JUL 08	JPK	YB	RGS	ERS

PROPRIETARY NOTICE: THIS DOCUMENT IS THE PROPERTY OF SUMITOMO (SHI) CRYOGENICS OF AMERICA, INC., AND SHALL NOT, WITHOUT THE EXPRESS WRITTEN PERMISSION OF SCAI, BE REPRODUCED OR COPIED IN WHOLE OR IN PART BY ANY PERSON OUTSIDE OF SCAI OR, IF LOANED BY SCAI TO SUCH PERSON, SHALL NOT BE USED FOR FURNISHING INFORMATION TO ANY THIRD PARTY OR FOR ANY PURPOSE OTHER THAN THAT FOR WHICH IT IS LOANED.  
FORM NO. DD102089-A Rev. B (3/00)