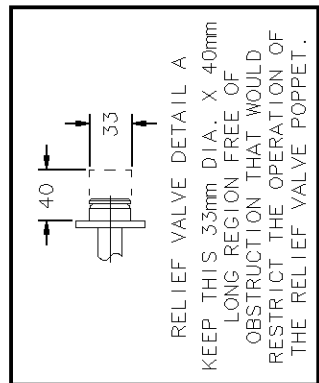
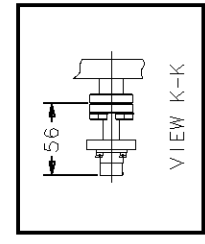


| MATERIAL LEGEND | |
|-----------------|--------------|
| DESIGNATION | MATERIAL |
| | ST. STL. |
| | ALUMINUM |
| | COPPER, OFHC |

DIMENSIONS ARE IN
MILLIMETERS (mm)
UNLESS OTHERWISE SPECIFIED.



APPLICABLE SPECIFICATIONS:
GENERAL PRODUCT SPECIFICATIONS - TBD
CONFIGURATION SPECIFICATION - 265120A160
SALES WORKSHEET - CP-16 1001

SHOWN WITH MOST COMMON ACCESSORIES
REFER TO SALES WORKSHEET FOR OPTIONAL
ACCESSORIES.

PROJECT: cryopumps_cp16

OUTLINE DRAWING
CP-16 CRYOPUMP ASSEMBLY
50/60 HZ
ISO 400

TITLE

| REV. | CRSP NO. | DATE | BY | MFG. | YB | RGS | ERS | ENGR. |
|------|----------|------|----|------|----|-----|-----|-------|
| | | | | | | | | |
| | | | | | | | | |
| | | | | | | | | |
| | | | | | | | | |
| | | | | | | | | |
| | | | | | | | | |
| | | | | | | | | |
| | | | | | | | | |
| | | | | | | | | |

NO. 265120A160I00-C
SHEET 1 OF 1

