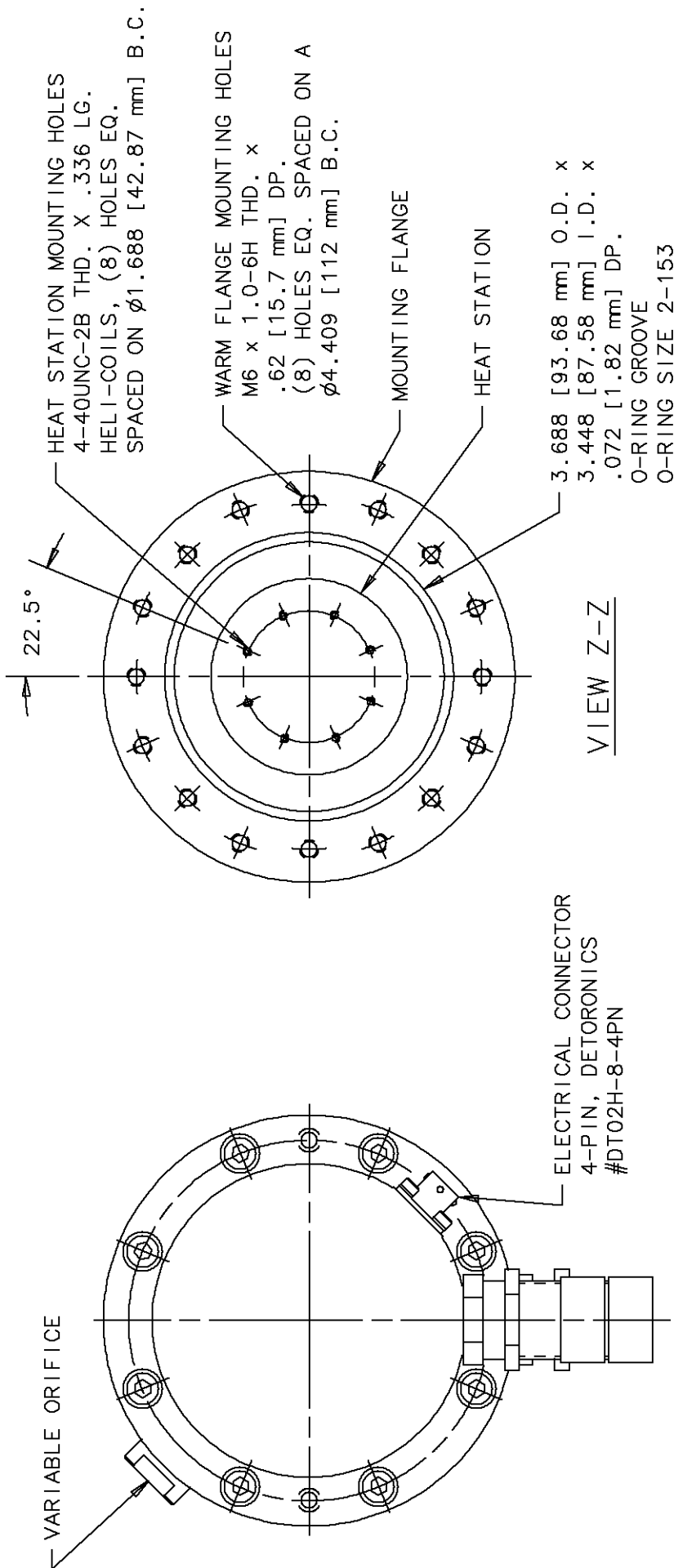


TITLE		MODEL NO. CH-104 COLD HEAD ASSEMBLY		SHEET 1 OF 2	
B	4944	12/17/10	KJJ	PZ	RBS
A	4939	06 MAY 10	JKK	ERS	RBS
REV.	CRSP NO.	DATE	BY	MFG.	ENGR.

Sumitomo
 (SHI) CRYOGENICS OF AMERICA, INC.
 NO. 267618D2-C
 PROPRIETARY NOTICE: THIS DOCUMENT IS THE PROPERTY OF SUMITOMO (SHI) CRYOGENICS OF AMERICA, INC., AND SHALL NOT, WITHOUT THE EXPRESS WRITTEN PERMISSION OF SCAI, BE REPRODUCED OR COPIED IN WHOLE OR IN PART BY ANY PERSON OUTSIDE OF SCAI OR, IF LOANED BY SCAI TO SUCH PERSON, SHALL NOT BE USED FOR FURNISHING INFORMATION TO ANY THIRD PARTY OR FOR ANY PURPOSE OTHER THAN THAT FOR WHICH IT IS LOANED.
 FORM NO. DD102089-A Rev. B (3/00)



Sumitomo
(SHI) CRYOGENICS OF AMERICA, INC.

REV. B

MODEL NO. CH-104 COLD HEAD ASSEMBLY

NO. 267618D2-C

SHEET 2 OF 2

TITLE		DATE		BY		MFG.		QUAL.		ENGR.	
REV.	CRSP NO.	1/29/09	KJJ	YB	RGS	RBS					

PROPRIETARY NOTICE: THIS DOCUMENT IS THE PROPERTY OF SUMITOMO (SHI) CRYOGENICS OF AMERICA, INC., AND SHALL NOT, WITHOUT THE EXPRESS WRITTEN PERMISSION OF SCAI, BE REPRODUCED OR COPIED IN WHOLE OR IN PART BY ANY PERSON OUTSIDE OF SCAI OR, IF LOANED BY SCAI TO SUCH PERSON, SHALL NOT BE USED FOR FURNISHING INFORMATION TO ANY THIRD PARTY OR FOR ANY PURPOSE OTHER THAN THAT FOR WHICH IT IS LOANED.

FORM NO. DD102089-A Rev. B (3/00)